



# ODECA s.r.l.

Industrial Weighing System

Member of CISQ Federation



**CERTIFIED MANAGEMENT SYSTEM**  
**ISO 9001**

COMITATO  
**Co Me Lab**  
COSTRUTTORI METROLOGIA LABORATORI



## Odeca PC Recorder System

- PC Recorder Service
- PC Recorder Manager
- PC Recorder Client Interface

Version: 2.0

**ODECA s.r.l.**

Via dell'Industria, 20 - 21044 Cavaria (VA) Italy

Tel. +39 0331 219156 - Fax +39 0331 218366 - email: [software@odeca.it](mailto:software@odeca.it)

Cap. Soc. € 26.000,00 I.V. - P.IVA / C.F. 02476780123 - R.E.A. 260729 - Reg. Imp. VA-1999-754 - Registro A.E.E. IT0802000002039

Azienda certificata UNI EN ISO 9001:2008 - Approvazione Metrica CE n. I-VA-004

## General description

The Odeca PC Recorder system allows the recording in real time of all the operations carried out through Odeca weighing systems connected to its intranet. The data associated with each transaction (weighed) is transferred to a SQL table that can be used by any external system that needs to read and process such data.

The system consists mainly of three applications installed in a single solution:

- ❖ Odeca PC Recorder Service (OPCR Service.exe)
- ❖ Odeca PC Recorder Manager (OPCR Manager.exe)
- ❖ Odeca PC Recorder Client Interface (OPCR Client.exe)

## Minimum hardware and software requirements

### Supported Operating System

*Operating System client ( 32 and 64 bit ) :*

- Windows 11
- Windows 10
- Windows 8.1
- Windows 8

*Operating System server:*

- Windows Server 2019
- Windows Server 2016
- Windows Server 2012 R2
- Windows Server 2012 (solo 64 bit)

### Minimum hardware requirements :

- PROCESSOR: minimum 1,75 GHz, recommended 2,5 GHz
- MEMORY (RAM): minimum 4 GB, recommended 8 GB
- Disk space based on operating system and necessary prerequisites (min. 45 MB)

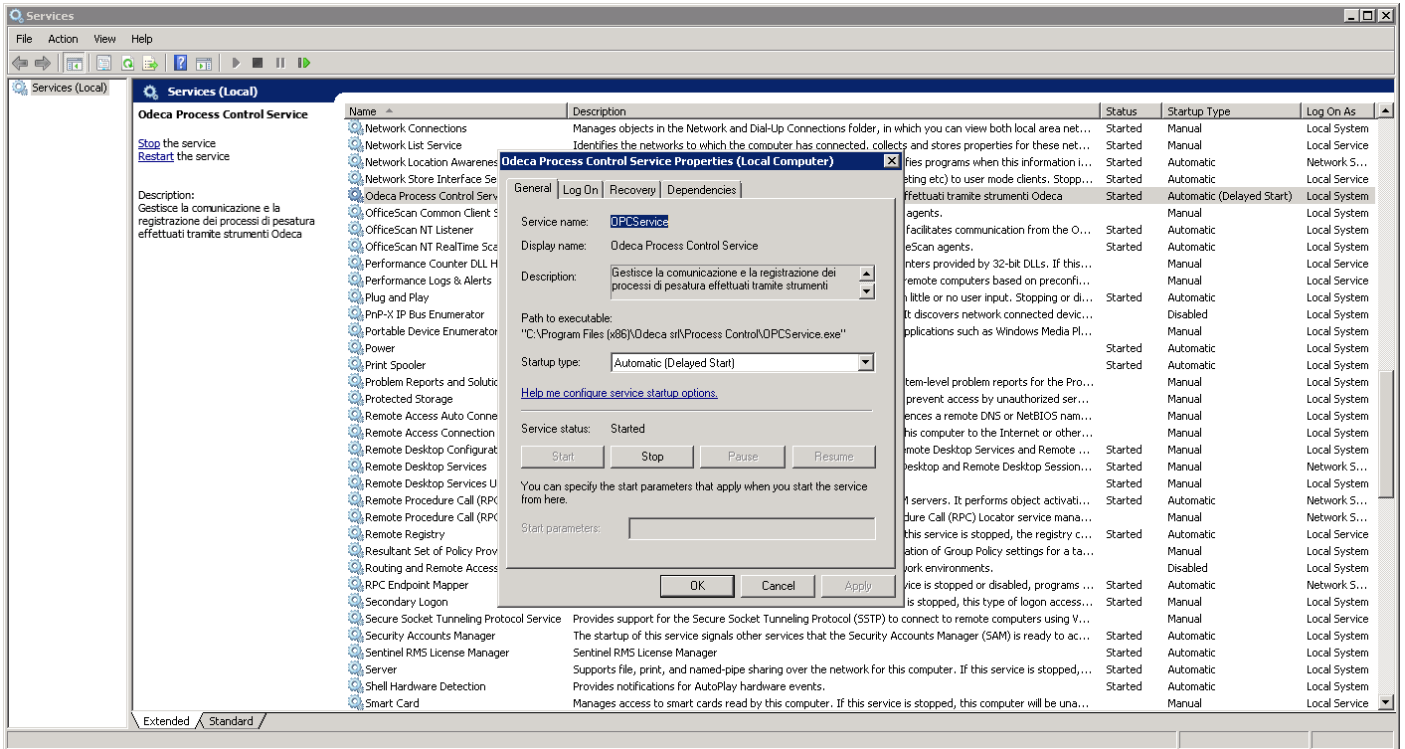
### Special requirements to share database:

- Microsoft SQL Server service active on the local network and reachable from the PC or server on which the program will be installed
- An instantiated empty database on the active Microsoft SQL Server service

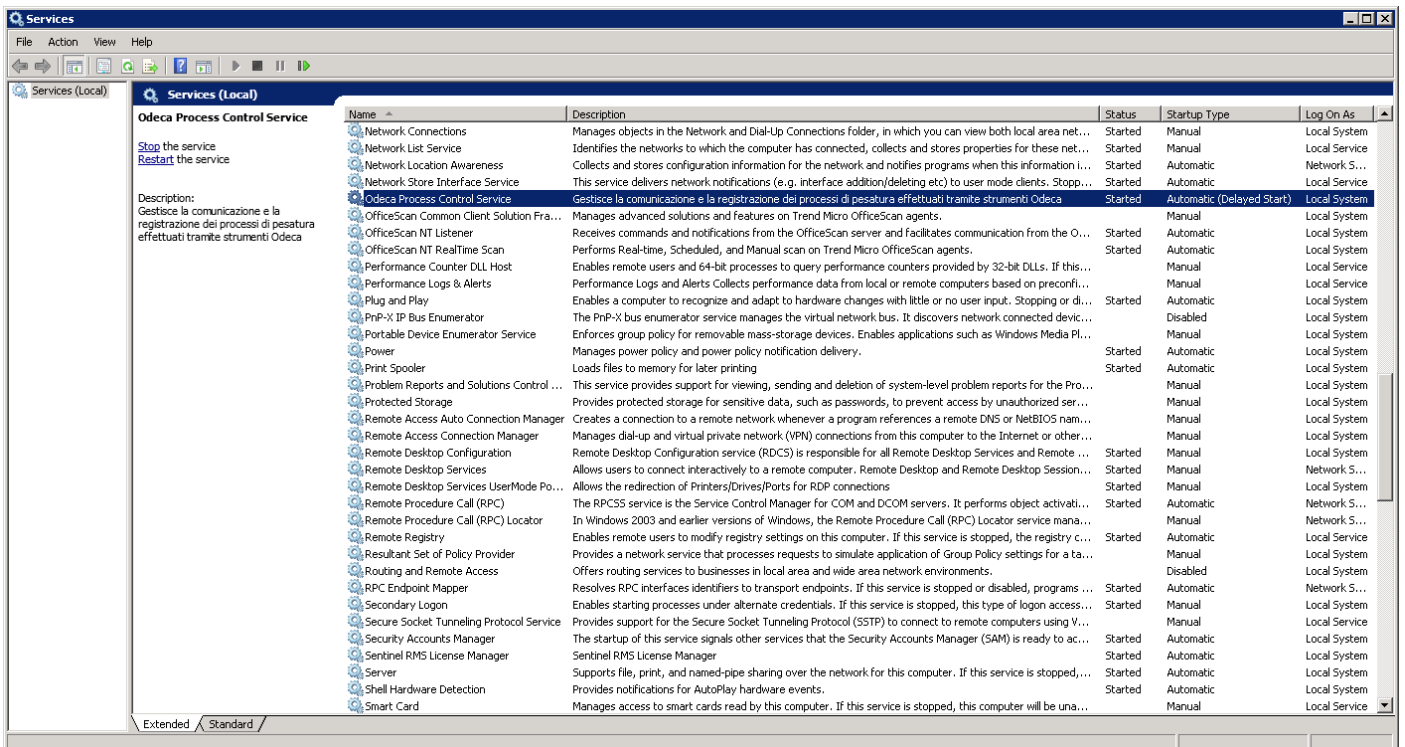
## Odeca PC Recorder Service (OPCR Service.exe)

It is a Windows service that can start independently even without logging in with any Windows user. It is the heart of the system and manages communication with the connected weighing stations; through the constant monitoring of the status of each balance, it allows the real-time recording of all transactions made with the same.

You can view the status of the service via the Windows application "Services"



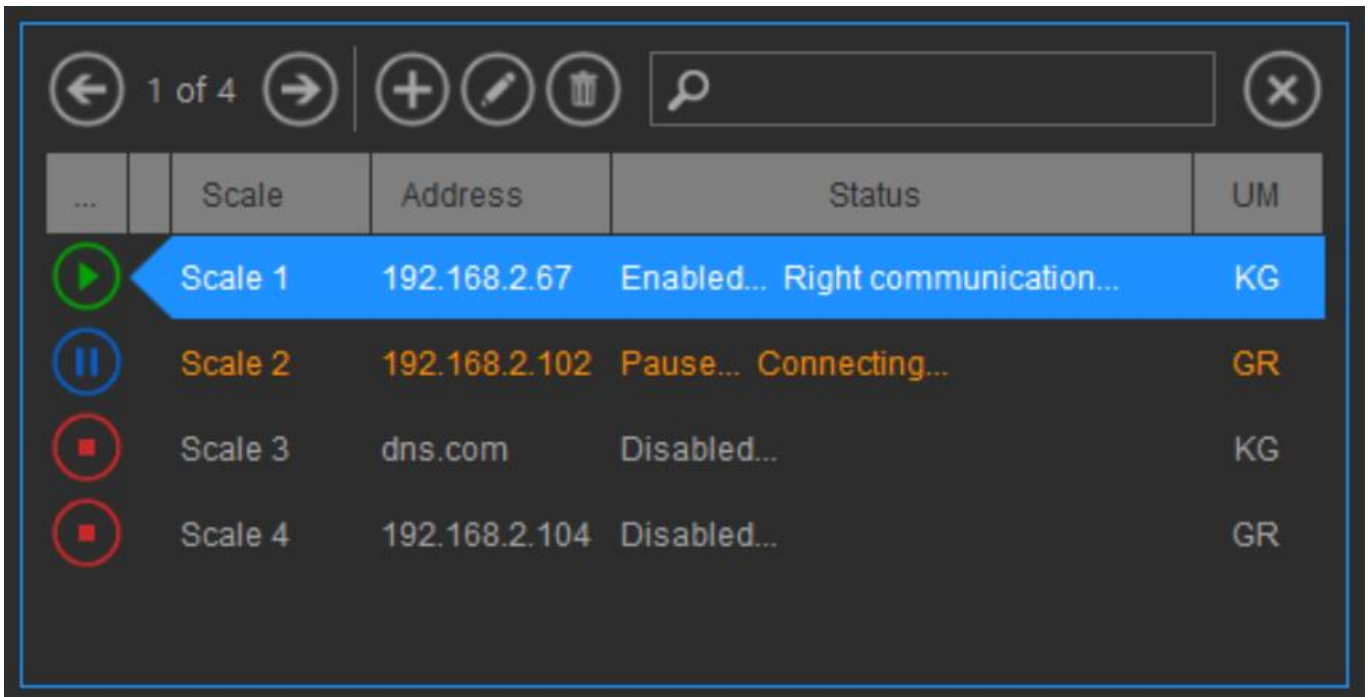
With the same application you can turn on/off or restart the service OPCR Service.exe



## Odeca PC Recorder Manager (OPCR Manager.exe)

The application serves as an interface for configuring the Odeca PC Recorder Service (OPCR Service.exe), displays the status of each connected weighing system and allows the configuration of communication parameters for each of them.

Through the buttons "Play", "Pause" and "Stop" you can activate the recording of transactions made with the enabled device (Play), leave only the connection and the status monitoring without storing transactions (Pause) or completely disable the connection with the device (Stop):



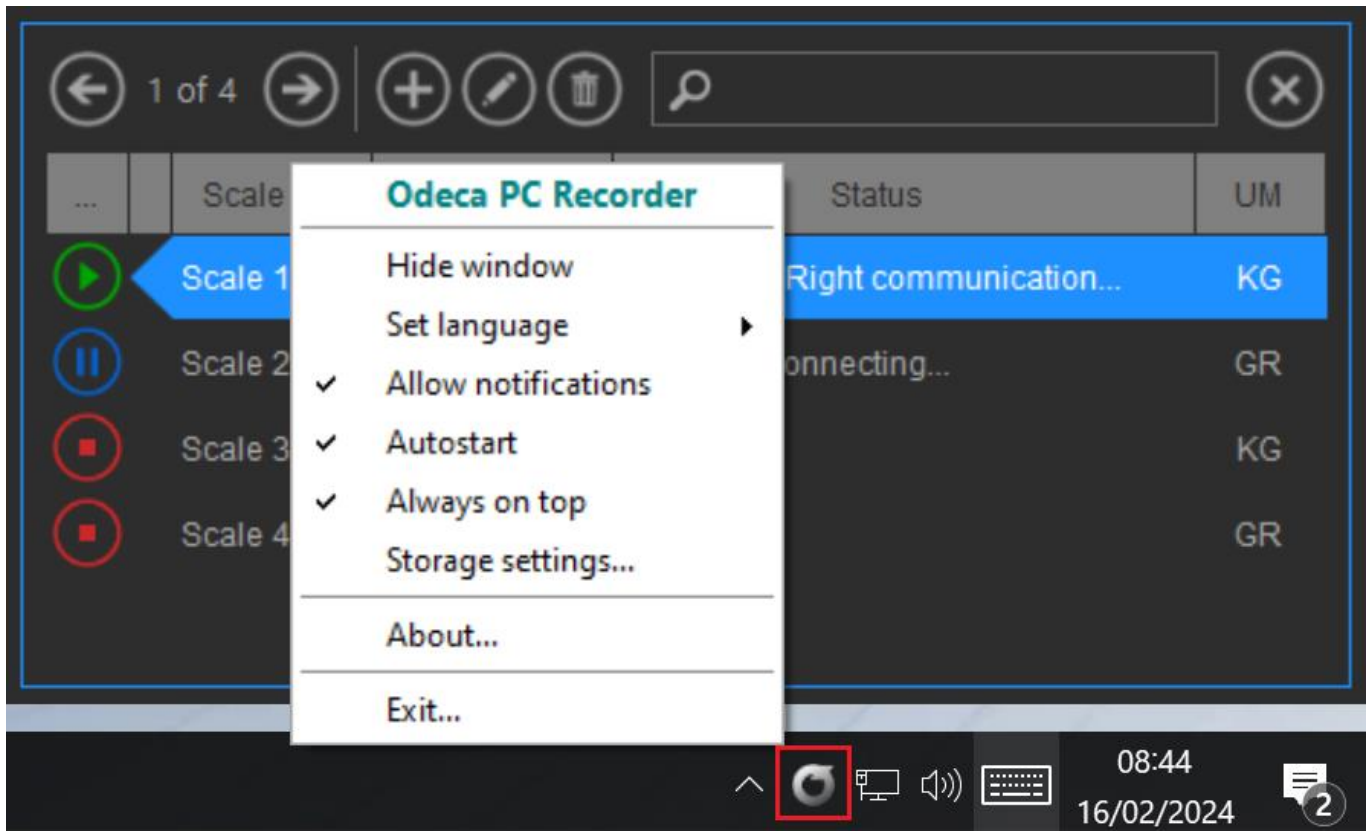
Using the keys "More", "Edit", "Delete" you can add new devices (balances) to monitor, change their parameters or delete old devices no longer used:

### Edit device

Description:

Unit of measure:  Address:  IP  DNS

From the notification area in the taskbar, by clicking on the icon highlighted below, you can access the program settings or configure some of them directly:



If the "Auto-Start" parameter is checked, the Odeca PC Recorder Service will automatically activate each time the system is booted and without the need for a Windows user to log in; if this parameter is not activated, the Odeca service can be activated manually by running the Odeca PC Recorder Manager application and only after logging in.

By clicking on "Database Settings" you can specify the parameters for access to a possible remote and/or shared SQL Server database:

## Odeca PC Recorder Client Interface (OPCR Client.exe)

The application serves as an interface for visualizing and managing stored transactions. Through this application it is possible to filter, print and export the records present inside the relative table SQL.

The screenshot displays the Odeca PC Recorder Client 2.3 interface. At the top, it shows the window title and standard window controls. Below this, there is a header section with the following information: 'Weighs from Friday, February 16, 2024 12:00:00 AM to Friday, February 16, 2024 11:59:59 PM', 'Server: <all>', and 'Device: <all>'. A toolbar with various icons for navigation and actions is located below the header. The main area contains a table with the following data:

Nr	Date/Time	Net (kg)	Tare (kg)	Gross (kg)	Asw	Pieces	Code 1	Code 2	Device	Server
109	2/16/2024 8:25:01 AM	1.400	1.200	2.600	0.000000	0			Scale 2	MSI-TV
75	2/16/2024 8:27:07 AM	18.450	5.750	24.200	0.000000	0			Scale 1	MSI-TV
76	2/16/2024 8:27:26 AM	23.300	4.850	28.150	0.000000	0			Scale 1	MSI-TV

At the bottom of the interface, there is a status bar with the text 'Unsaved changes...' on the left and summary statistics on the right: 'TOT. GROSS: 54.95 kg', 'TOT. TARE: 11.8 kg', 'TOT. NET: 43.15 kg', and 'TOT. PIECES: 0'.